

## May 2021 Edition:

Below is a recap of key items impacting transportation today. It is a compilation of information from our team, carrier partners, customers, and industry sources.

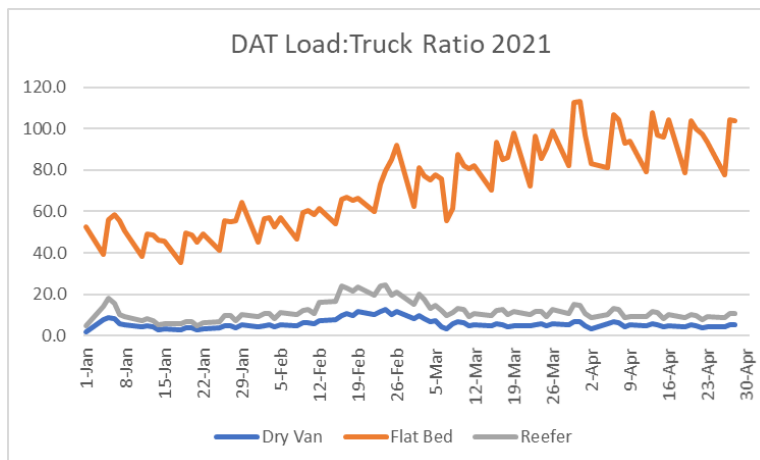
### Regulatory/Governmental Updates:

- The US/Canada and US/Mexico border closures have been formally extended through May 21, 2021.
- On April 28 the [Ninth Circuit Court of Appeals](#) reversed an injunction on California's AB5 law. The current injunction could be lifted as early as May 19<sup>th</sup>, pending further legal developments.
- Congress is looking at [increasing carrier liability insurance](#) minimums for trucking.

### Market Updates

#### Bulk, LTL & Truckload (Van/Reefer/Flatbed):

- As of March (latest report available), [54,237 drivers](#) have been put out of service due to the drug/alcohol clearinghouse. Of those, 41,029 had not yet started the return to duty process.
- DAT reported the Van Load to Truck ratio decreased by -9.5% last week, while the Reefer Load to Truck ratio decreased by -8.8% over the prior week.
- No significant changes in the bulk market for capacity. Carriers continue to focus on providing capacity to their core customers and have less capacity available for backup or spot shipments.
- Driver turnover/capacity remains an issue across the industry. There is potential for [gasoline shortages this summer](#), due to a lack of trained delivery drivers.
- Weight and pallet restrictions imposed by some LTL carriers remain in place. In addition to driver shortages, carriers are indicating there are challenges with staffing enough dock workers at the local terminals.



Source: DAT Solutions, LLC.

**CVSA Road Check is scheduled for May 4-6, 2021**



Click the image to go to the CVSA website for more details

### Considering a Tank Truck Outsource?:

The CLX whitepaper on outsourcing tank truck logistics is available [here](#).

### Export/Import/Ocean:

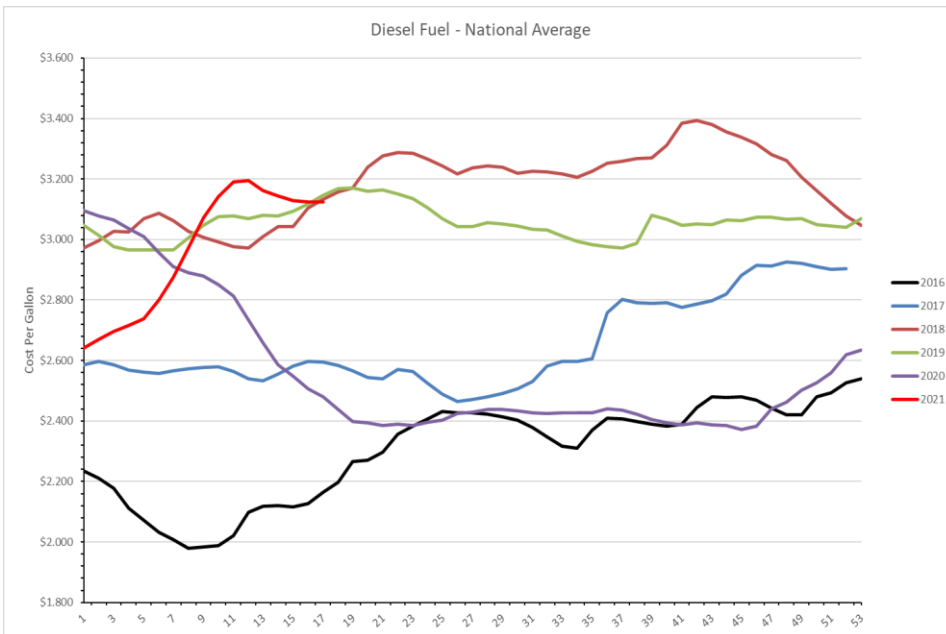
- As container shipments continue at high level pace, the Port of Long Beach recorded its [busiest month in March](#).
- On a related note, steamship lines are experiencing [record revenues](#) with the overwhelming demand.
- Air cargo rates between [Hong Kong and North America](#) exceeded \$9/kg mark in April. Quarantine restrictions have limited the capacity available in the air cargo sector, but have been [relaxed](#) recently.

### Rail:

- The [Association of American Railroads](#) has reported that US weekly traffic for the week ending April 24, 2021 was up 30% as compared to the same week last year.
- Following last month's bid by Canadian Pacific to purchase Kansas City Southern, [CN has now submitted an offer](#) as well.

### Fuel:

- After 21 weeks of consecutive increases, the national average for diesel fuel has stabilized around \$3.12/gallon the past several weeks.
- National average cost is \$3.124/gallon for the week of April 26<sup>th</sup>.



Source: U.S. Energy Information Administration

### Having Capacity Issues?

CLX Brokerage Services can help alleviate some of the capacity issues you may be experiencing with your pool of carriers.

Contact us for more info:

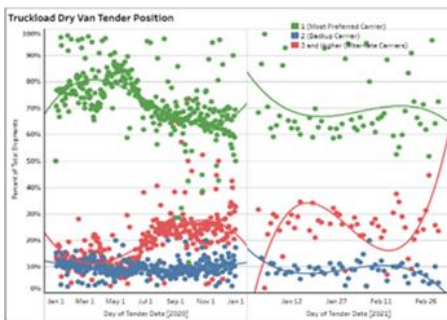
[Brokerage@clxlogistics.com](mailto:Brokerage@clxlogistics.com)

## Market Tender Position → Three Month recap:

- The three-month trend of tender acceptance as noted by the CLX carrier network for sequential tenders is below.
- Green dots/line represents the primary carrier, blue represents the backup carrier, red represents other alternate carrier options.
- Capacity remains tight in both segments. Truckload rejections by primary carriers increased in April as noted below.

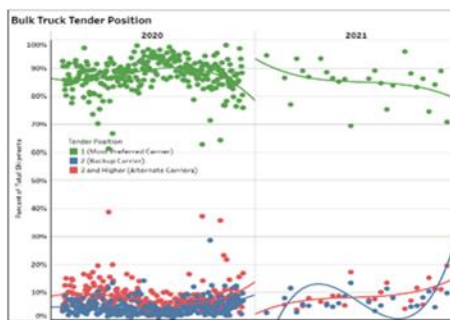
### TRUCKLOAD

#### February 2021

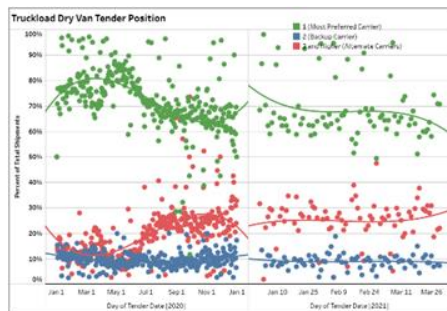


### BULK

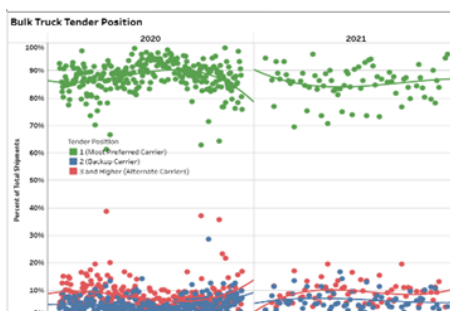
#### February 2021



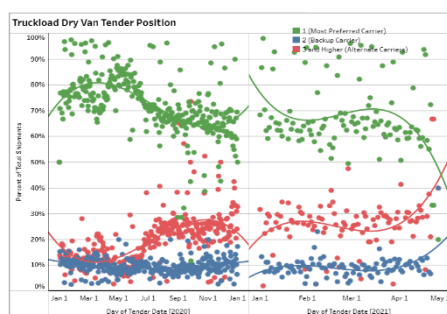
#### March 2021



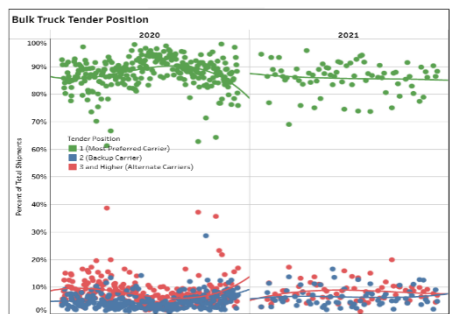
#### March 2021



#### April 2021



#### March 2021



Source: CLX Logistics US carrier network. YTD April 2021. Customer pickup and return shipments excluded.

To get a free demonstration using your data and integrating the transportation managed analytics program into your data [contact us](#) today.