

April 2021 Edition:

Below is a recap of key items impacting transportation today. It is a compilation of information from our team, carrier partners, customers, and industry sources.

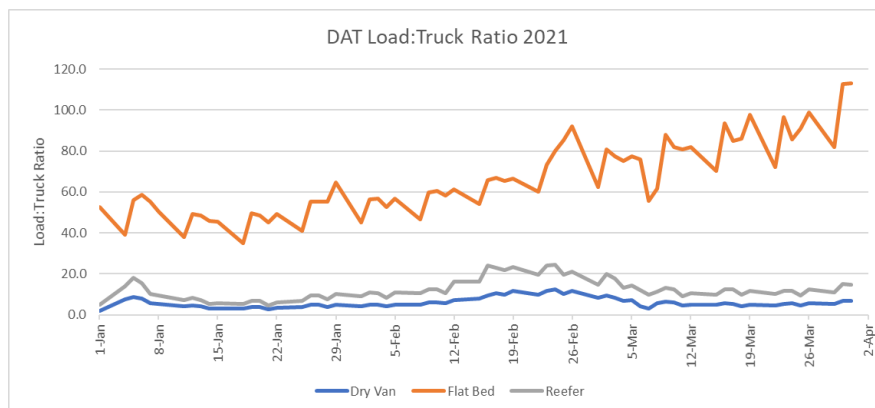
Regulatory/Governmental Updates:

- The US/Canada and US/Mexico border closures have been formally extended through April 21, 2021.
- The status of owner operators via California’s AB5 is still being [challenged in court](#), and the PRO Act could also negatively impact trucking’s owner operator model.
- Congress is exploring allowing [under-21 interstate driving](#) via apprenticeship program.

Market Updates

Bulk, LTL & Truckload (Van/Reefer/Flatbed):

- As of February (latest report available), [50,512 drivers](#) have been put out of service due to the drug/alcohol clearinghouse. Of those, 38,243 had not yet started the return to duty process.
- DAT reported the Van Load to Truck ratio increased by 4.1% last week, while the Reefer Load to Truck ratio increased by 0.4% over the prior week.
- DAT Load to truck ratio for vans and reefers decreased in March as compared to February. Van ratio decreased from 7.9 to 5.8, reefer ratio decreased from 16.4 to 12.4.
- The bulk market continues to remain tight as well. Carriers are focusing on providing capacity to their core customers and have less capacity available for backup or spot shipments.
- Weight and pallet restrictions are being imposed by some LTL carriers due to the influx of demand caused by capacity issues on other modes which is driving shippers to move heavier shipments to LTL.



Source: DAT Solutions, LLC.

CVSA Road Check is scheduled for May 4-6, 2021



Click the image to go to the CVSA website for more details

Considering a Tank Truck Outsource?:

The CLX whitepaper on outsourcing tank truck logistics is available [here](#).

Export/Import/Ocean:

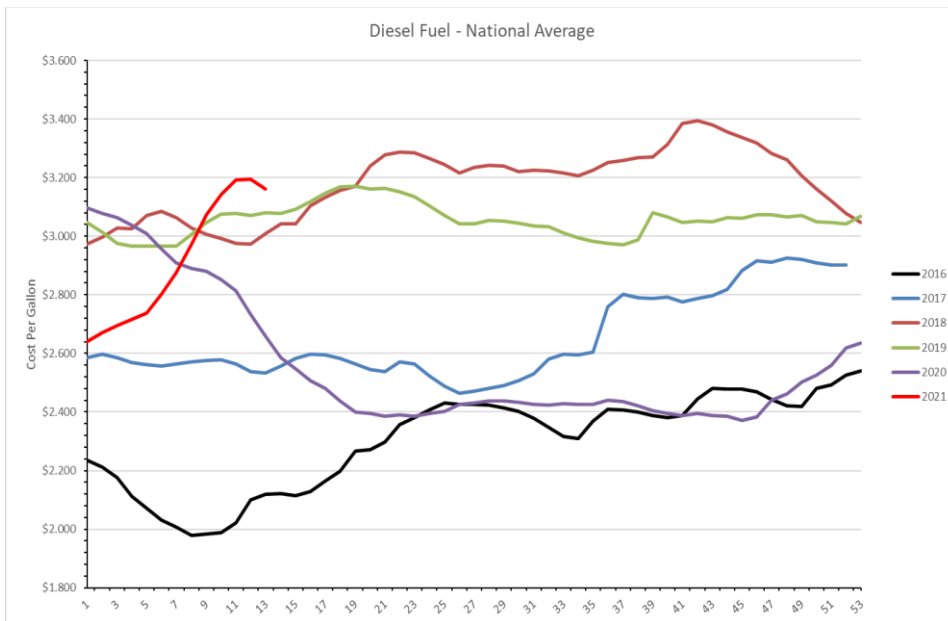
- In an already constrained market, shippers are assessing the impacts from the [Ever Green container ship](#) getting stuck in the Suez Canal.
- Air cargo capacity is also [over-saturated](#) due to impacts from retail and industrial demand, combined with reduced air traffic which supplies more than 50% of typical air cargo capacity.
- A Wall Street Journal “number of the day” stat earlier this week noted that the cost to ship from Shanghai to Rotterdam is up 342% from a year ago.

Rail:

- The [Association of American Railroads](#) has reported that US weekly traffic for the week ending March 27, 2021 was up 16.1% as compared to the same week last year.
- Canadian Pacific is preparing to [purchase Kansas City Southern](#) for \$25 billion.

Fuel:

- After 21 weeks of consecutive increases, the national average for diesel fuel decreased (week of March 29th). The national average price per gallon this week is \$3.161.



Source: U.S. Energy Information Administration

Having Capacity Issues?

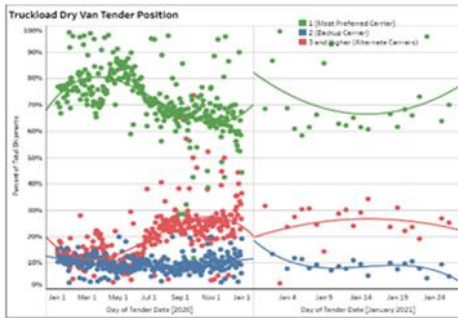
CLX Brokerage Services can help alleviate some of the capacity issues you may be experiencing with your pool of carriers.

Contact us for more info:
Brokerage@clxlogistics.com

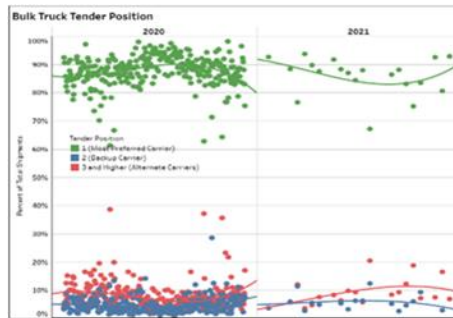
Market Tender Position → Three Month recap:

- The three-month trend of tender acceptance as noted by the CLX carrier network for sequential tenders is below.
- Green dots/line represents the primary carrier, blue represents the backup carrier, red represents other alternate carrier options.
- Capacity remains tight in both segments; winter weather is pretty much over, but produce season is just around the corner for Truckload shipments.

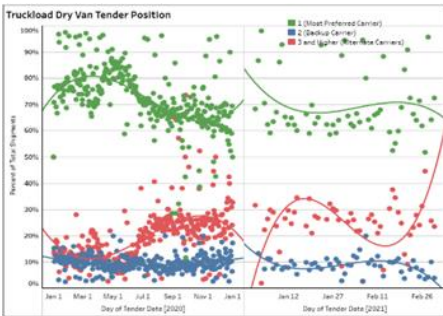
TRUCKLOAD January 2021



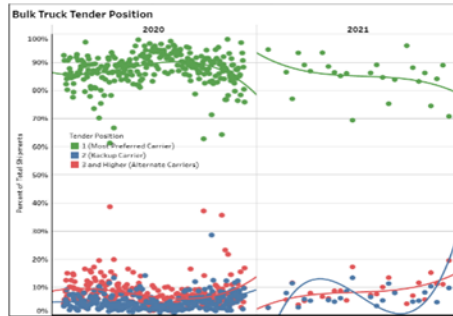
BULK January 2021



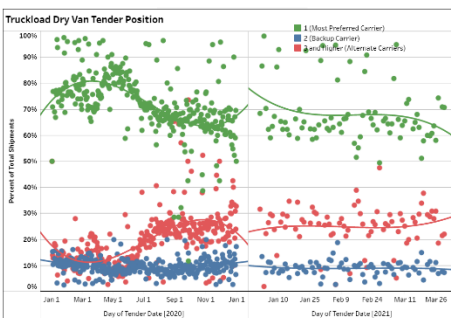
February 2021



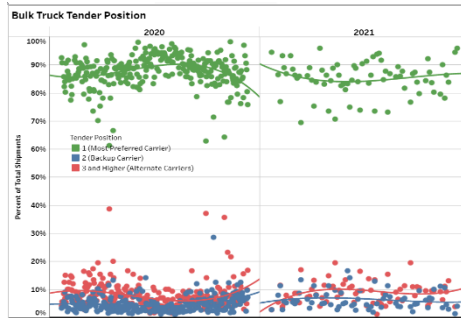
February 2021



March 2021



March 2021



Source: CLX Logistics US carrier network. YTD March 2021. Customer pickup and return shipments excluded.

To get a free demonstration using your data and integrating the transportation managed analytics program into your data [contact us today.](#)